

The background is a solid red color. Scattered across it are various types of nuts and chocolates. There are whole walnuts, some of which are coated in dark chocolate. There are also round, textured white chocolates and dark chocolates with visible nut pieces. The text 'ARKMEN' is centered in a white tilted box, and 'Discover new products!' is in large white bold letters with a black outline. At the bottom, 'Arkmen 2020' is written in white.

ARKMEN

**Discover new
products!**

Arkmen 2020

About us

Arkmen is a young, dynamically developing company that specialises on a production of sweets with nuts.

It has been established in July, 2017, started export activity in September 2018, and today Arkmen products are exported to Netherlands, Sweden, France, Germany, England, Slovakia, Poland, Lithuania, Korea, Japan, Malaysia, UAE.

We produce natural products, in a modern, eye-catching packaging, at a reasonable price, while maintaining our main focus on the customers' needs.

Besides delivering high quality products, we also focus on providing best service, so that your experience with Arkmen is as smooth as possible.



Why work with Arkmen

- ✓ Only selected, best quality raw materials.
- ✓ Variety of snacks and packaging to fit any budget and customer.
- ✓ All products are **Halal** and **ISO** Certified, **HACCP** system is implemented in the manufacturing facility.
- ✓ Open for **Private Label** cooperation.
- ✓ **Flexibility and individual approach** – Arkmen is an agile company that aims to serve every customer's need. We can adjust product recipe, ingredients list, packaging. Name it – we do it.
- ✓ **24/7 support** – you will be assigned with Arkmen manager that will be in touch 24/7 to assist you with necessary information about products, documentation, certification, etc.
- ✓ Our **well developed logistic routes** will give you the advantage of a low rate and high speed of delivery.



Peanut clusters

NEW

Peanut Clusters with White Compound

Article number: 031

Ingredients: white compound, peanuts

Recipe options: sugar free, compound chocolate, real chocolate

Shelf life: 12 months

1000
grams



Peanut Clusters with Milk Compound

Article number: 032

Ingredients: milk compound, peanuts

Recipe options: sugar free, compound chocolate, real chocolate

Shelf life: 12 months

1000
grams



Net weight of individually wrapped candy

13.5

Qty of pcs in display

74

Net weight of display

1000g

Qty of displays in master carton

6

Qty of master cartons on pallet

100

Qty of displays on pallet

600

Qty of displays in truck

19800

Qty of master cartons in 20ft

6600

Qty of master cartons in 40ft

15000

Outer carton dimensions

443x313x184

Coco Clusters

NEW

Coco Clusters with White Compound

Article number: 028

Ingredients: white compound, desiccated coconut flakes

Recipe options: sugar free, compound chocolate, real

Shelf life: chocolate
12 months

1000
grams



Coco Clusters with Dark Compound

Article number: 0027

Ingredients: dark compound, desiccated coconut flakes

Recipe options: sugar free, compound chocolate, real chocolate

Shelf life: 12 months

1000
grams



Net weight of individually wrapped candy	13.5
Qty of pcs in display	74
Net weight of display	1000g
Qty of displays in master carton	6
Qty of master cartons on pallet	100

Qty of displays on pallet	600
Qty of displays in truck	19800
Qty of master cartons in 20ft	6600
Qty of master cartons in 40ft	15000
Outer carton dimensions	443x313x184

Rice puffs clusters

NEW

Rice Puffs Clusters with White Compound

Article number: 0030

Ingredients: white compound, rice puffs

Recipe options: sugar free, compound chocolate, real chocolate

Shelf life: 12 months

800
grams



Rice Puffs Clusters with Milk Compound

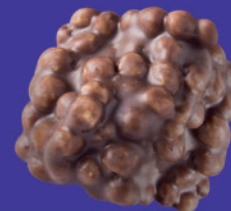
Article number: 0029

Ingredients: milk compound, rice puffs

Recipe options: sugar free, compound chocolate, real chocolate

Shelf life: 12 months

800
grams



Net weight of individually wrapped candy

10

Qty of pcs in display

80

Net weight of display

800g

Qty of displays in master carton

6

Qty of master cartons on pallet

100

Qty of displays on pallet

600

Qty of displays in truck

19800

Qty of master cartons in 20ft

6600

Qty of master cartons in 40ft

15000

Outer carton dimensions

443x313x184

Peanut Clusters

NEW

Peanut Clusters with White Compound

Article number: 0022
Ingredients: white compound, peanuts
Allergens: lactose, peanuts, soya
Recipe options: sugar free, compound chocolate, real chocolate
Shelf life: 12 months



175
grams



Peanut Clusters with Milk Compound

Article number: 0023
Ingredients: milk compound, peanuts
Allergens: lactose, peanuts, soya
Recipe options: sugar free, compound chocolate, real chocolate
Shelf life: 12 months



175
grams



Qty of items per carton **30**
 Qty of cartons on pallet (120x80x235) **104**
 Qty of items on pallet **3120**

Qty of items in truck **102960**
 Qty of items in 20ft container **34320**

Qty of items in 40ft container **78000**
 Outer carton dimensions **295x395x170**

Coco Clusters

NEW

Coco Clusters with White Compound

Article number: 0018
Ingredients: white compound, desiccated coconut flakes
Allergens: lactose, soya
Recipe options: sugar free, compound chocolate, real chocolate
Shelf life: 12 months



175
grams



Coco Clusters with White Compound

Article number: 0017
Ingredients: dark compound, desiccated coconut flakes
Allergens: soya
Recipe options: sugar free, compound chocolate, real chocolate
Shelf life: 12 months



175
grams



Qty of items per carton 30
Qty of cartons on pallet (120x80x235) 104
Qty of items on pallet 3120

Qty of items in truck 102960
Qty of items in 20ft container 34320

Qty of items in 40ft container 78000
Outer carton dimensions 295x395x170

Rice Puffs Clusters

NEW

Rice Puffs Clusters with White Compound

Article number: 0020
Ingredients: white compound, rice puffs
Recipe options: sugar free, compound chocolate, real chocolate
Shelf life: 12 months

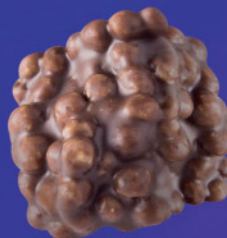


175
grams



Rice Puffs Clusters with Milk Compound

Article number: 0019
Ingredients: milk compound, rice puffs
Recipe options: sugar free, compound chocolate, real chocolate
Shelf life: 12 months



175
grams



Qty of items per carton **30**
 Qty of cartons on pallet (120x80x235) **104**
 Qty of items on pallet **3120**

Qty of items in truck **102960**
 Qty of items in 20ft container **34320**

Qty of items in 40ft container **78000**
 Outer carton dimensions **295x395x170**

Nutty – Peanut & Fruit Clusters

Nutty with white compound

Article number: 0011

Ingredients: peanuts, white compound, dried apple pieces, cornflakes

Recipe options: compound chocolate, real chocolate

Packaging: candies individually packed in 3 layer film, carton box

Shelf life: 12 months



100
grams



Nutty with milk compound

Article number: 0012

Ingredients: peanuts, milk compound, honey caramel, cinnamon

Recipe options: sugar free, compound chocolate, real chocolate

Packaging: candies individually packed in 3 layer film, carton box

Shelf life: 12 months



100
grams



Nutty with dark compound

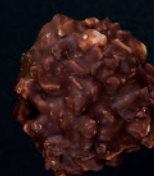
Article number: 0013

Ingredients: peanuts, dark compound, apple pastilles, sea salt

Recipe options: sugar free, compound chocolate, real chocolate

Packaging: candies individually packed in 3 layer film, carton box

Shelf life: 12 months



100
grams



Qty of items per carton

20

Qty of cartons on pallet (120x80x235)

104

Qty of items on pallet

2080

Qty of items in truck

68640

Qty of items in 20ft container

22880

Qty of items in 40ft container

52000

Outer carton dimensions

295x395x170

ARK
MEN

Nutty – Peanut & Fruit Clusters

Nutty with white compound

Article number: 0014

Ingredients: peanuts, white compound, dried apple pieces, cornflakes

Recipe options: compound chocolate, real chocolate

Packaging: candies individually packed in 3 layer film, 300g bag

Shelf life: 12 months



300
grams

Nutty with milk compound

Article number: 0015

Ingredients: peanuts, milk compound, honey caramel, cinnamon

Recipe options: sugar free, compound chocolate, real chocolate

Packaging: candies individually packed in 3 layer film, 300g bag

Shelf life: 12 months



300
grams

Nutty with dark compound

Article number: 0016

Ingredients: peanuts, dark compound, apple pastilles, sea salt

Recipe options: sugar free, compound chocolate, real chocolate

Packaging: candies individually packed in 3 layer film, 300g bag

Shelf life: 12 months



300
grams

arkmen.com.ua.



Qty of items per carton

12

Qty of cartons on pallet (120x80x235)

104

Qty of items on pallet

1248

Qty of items in truck

41184

Qty of items in 20ft container

13728

Qty of items in 40ft container

31200

Outer carton dimensions

295x395x170

Nutty – Peanut & Fruit Clusters

Nutty with white compound

Article number: 0024

Ingredients: peanuts, white compound, dried apple pieces, cornflakes

Recipe options: compound chocolate, real chocolate

Packaging: candies are individually packed in 3 layer film, 1kg box

Shelf life: 12 months



1000
grams



Nutty with milk compound

Article number: 0025

Ingredients: peanuts, milk compound, honey caramel, cinnamon

Recipe options: sugar free, compound chocolate, real chocolate

Packaging: candies are individually packed in 3 layer film, 1kg box

Shelf life: 12 months



1000
grams



Nutty with dark compound

Article number: 0026

Ingredients: peanuts, dark compound, apple pastilles, sea salt

Recipe options: sugar free, compound chocolate, real chocolate

Packaging: candies are individually packed in 3 layer film, 1kg box

Shelf life: 12 months



1000
grams



Qty of items per carton

30

Qty of cartons on pallet (120x80x235)

104

Qty of items on pallet

2080

Qty of items in truck

68640

Qty of items in 20ft container

22880

Qty of items in 40ft container

52000

Outer carton dimensions

295x395x170

Walnuts

NEW

Walnuts – natural, raw

Article number: 0021
Packaging: 3 layer film bag
Shelf life: 12 months



**125
grams**

Walnuts – natural, raw

Article number: 0027
Type: Grade A, B, C
Mix type: 30% kernel, 80% kernel
Packaging: carton box – 5kg / 10kg, any weight
Shelf life: 12 months



Walnuts – shelled, for cracking

Article number: 0028
Size: 28+, 30+, 32+
Packaging: carton box, bag – any weight



	125g	5kg	10kg
Qty of items per carton	32	5kg	10kg
Qty of cartons on pallet (120x80x235)	104	136	72
Qty of items on pallet	3328	680kg	720kg
Qty of items in truck	109824	22440kg	23760kg
Qty of items in 20ft container	36608	7480kg	7920kg
Qty of items in 40ft container	83200	17000kg	18000
Outer carton dimensions	295x395x170	295x395x130	295x395x210

Nutti - Walnuts in Chocolate

Nutti – walnuts in dark compound

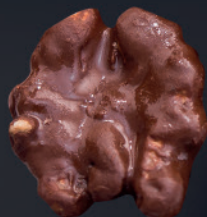
Article number: 0001

Ingredients: walnuts, dark compound

Recipe options: sugar free, compound chocolate, real chocolate

Packaging: 3 layer film, carton box.

Shelf life: 12 months



100
grams



Nutti – walnuts in milk compound

Article number: 0002

Ingredients: walnuts, milk compound

Recipe options: sugar free, compound chocolate, real chocolate

Packaging: 3 layer film, carton box.

Shelf life: 12 months



100
grams



Nutti – walnuts in white compound

Article number: 0003

Ingredients: walnuts, white compound

Recipe options: sugar free, compound chocolate, real chocolate

Packaging: 3 layer film, carton box.

Shelf life: 12 months



100
grams



Qty of items per carton

20

Qty of cartons on pallet (120x80x235)

104

Qty of items on pallet

2080

Qty of items in truck

68640

Qty of items in 20ft container

22880

Qty of items in 40ft container

52000

Outer carton dimensions

295x395x170

Nutti-Walnuts in Chocolate

Nutti – walnuts in dark compound

Article number: 0004
Ingredients: walnuts, dark compound
Recipe options: sugar free, compound chocolate, real chocolate
Packaging: 3 layer film, carton tube
Shelf life: 12 months



**100
grams**



Nutti – walnuts in milk and white compound

Article number: 0005
Ingredients: walnuts, milk compound, white compound
Recipe options: sugar free, compound chocolate, real chocolate
Packaging: 3 layer film, carton tube
Shelf life: 12 months



**100
grams**



Qty of items per carton	31
Qty of cartons on pallet (120x80x235)	112
Qty of items on pallet	3472

Qty of items in truck	114576	Qty of items in 40ft container	86800
Qty of items in 20ft container	38192	Outer carton dimensions	295x395x140

Nutti – Walnuts in Chocolate

Nutti – walnuts in dark compound

Article number: 0006

Ingredients: walnuts, dark compound

Recipe options: sugar free, compound chocolate, real chocolate

Packaging: 3 layer film, carton display box

Shelf life: 12 months



Nutti – walnuts in milk compound

Article number: 0007

Ingredients: walnuts, milk compound

Recipe options: sugar free, compound chocolate, real chocolate

Packaging: 3 layer film, carton display box

Shelf life: 12 months



Nutti – walnuts in white compound

Article number: 0008

Ingredients: walnuts, white compound

Recipe options: sugar free, compound chocolate, real chocolate

Packaging: 3 layer film, carton display box

Shelf life: 12 months



Qty of items in display box

8

Qty of items per carton

48

Qty of cartons on pallet (120x80x235)

140

Qty of items on a pallet

6720

Qty of items in truck

221760

Qty of items in 20ft container

73920

Qty of items in 40ft container

168000

Outer carton dimensions

230x375x160

Nutem – chocolate bar with walnuts

Nutem – chocolate bar with walnuts, honey caramel, and biscuit

Article number: 0009

Ingredients: milk compound, walnuts, natural honey, flour, milk, butter, starch syrup, salt, glycerol, ascorbic acid

Recipe options: sugar free, real chocolate, compound chocolate

Packaging: 3 layer film, carton display box

Shelf life: 6 months

Nutem – chocolate bar with walnuts, honey caramel, and biscuit

Article number: 0010

Ingredients: milk compound, walnuts, natural honey, flour, milk, butter, starch syrup, salt, glycerol, ascorbic acid

Recipe options: sugar free, real chocolate, compound chocolate

Packaging: 3 layer film, carton display box

Shelf life: 6 months



35
grams



55
grams



	35g	55g
Qty of items in display box	30	16
Qty of items per carton	180	128
Qty of cartons on pallet (120x80x235)	110	104
Qty of items on pallet	19800	13312
Qty of items in truck	653400	439296
Qty of items in 20ft container	217800	146432
Qty of items in 40ft container	495000	332800
Outer carton dimensions	375x230x190	295x395x170

ARKMEN

Contact us in any convenient way

- **Email:** export@arkmen.com.ua
- **Tel:** +380675119524 – Hanna Parkhomenko
- **Website:** arkmen.com.ua/en
- **Address:** 30-A Gagarina street, Tsybuliv settlement, Cherkasy Oblast, Ukraine, 19114.

Follow us on social media

- fb.com/Arkmen.nuts
- instagram.com/arkmen_nuts



Arkmen LLC
30-A, Gagarina street, Tsybuliv settlement, Cherkasy region,
Ukraine, 19114.
Tel.: +380675119524.
E-mail: export@arkmen.com.ua
arkmen.com.ua